

## ROLLER MILL GEARBOXES

vertical design | 1,600 kW planetary gear train | 43 t



Since 1901 C. u. W. Keller GmbH & Co. KG has been manufacturing innovative gears with diameters of up to 4 m for use in our special transmissions, with weights of up to 200 tons for the cement, sugar, steel, synthetics, mining and shipping industries. We are one of Germany's most important manufacturers of special gear units and are certified accordingly to DIN EN ISO 9001:2000. Our special strength lies in the ability to process your urgent requests flexibly and quickly. In addition to the production of highly complex gearboxes, we also manufacture gear elements to drawing and also provide maintenance, repairs and reinforcement of both our own gear units and those of other manufacturers.

To obtain a general overview of our products & services please visit our website [www.keller-getriebe.de](http://www.keller-getriebe.de)

## WOULD YOU LIKE TO KNOW MORE ABOUT US?

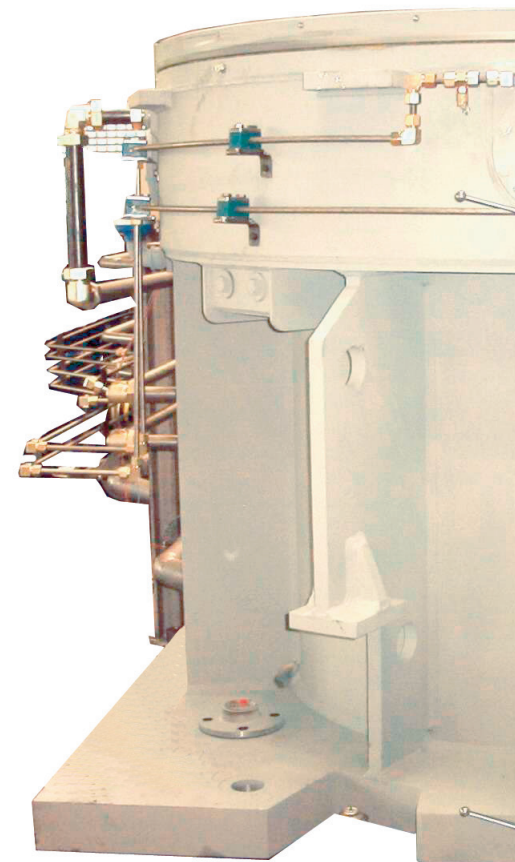
Please contact us by phone, fax or e-mail for more information – at no obligation.

**C. u. W. Keller GmbH & Co. KG**  
**Zahnradfabrik-Getriebebau**  
**Bonner Straße 38**  
**D-53842 Troisdorf-Spich**

**Phone:** +49 (0) 2241 – 988-0  
**Fax:** +49 (0) 2241 – 988-200  
**E-mail:** [keller@keller-getriebe.de](mailto:keller@keller-getriebe.de)  
**Web:** [www.keller-getriebe.de](http://www.keller-getriebe.de)



HIGH-PERFORMANCE GEARBOXES FROM KELLER FOR THE CEMENT INDUSTRY  
**POWER WITH A SYSTEM**



FOR THE CEMENT INDUSTRY WE MANUFACTURE:

mill gearboxes | kiln gearboxes | belt gearboxes, etc.  
with vertical and/or horizontal design

gears (e.g. pinions for the crown gears of the mills and kilns)

WE ALSO OFFER:

replacement parts, maintenance, repairs and  
reinforcement of existing systems

FOR WELL-KNOWN CUSTOMERS WE HAVE MANUFACTURED:

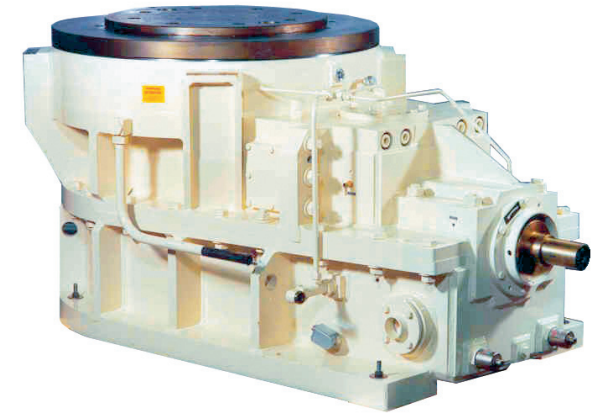
vertical bevel-planetary gearboxes and bevel helical  
gearboxes (Loesche)

horizontal helical gearboxes for mill and  
kiln pinion drives (KHD, VICAT)

mill and kiln pinions (ThyssenKrupp Polysius)

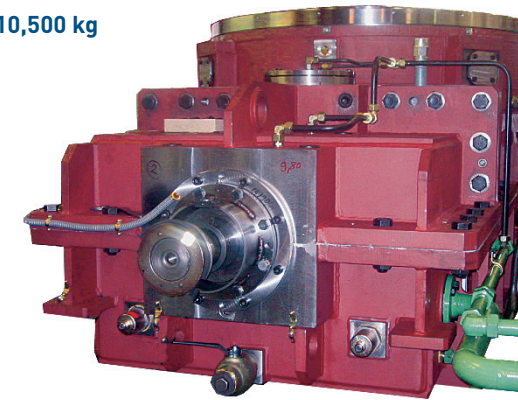
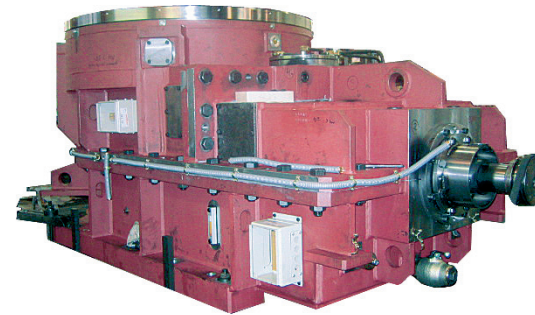
ROLLER MILL GEARBOXES

vertical design | 100 kW bevel helical gearbox | 5,250 kg



ROLLER MILL GEARBOXES

vertical design | 260 kW bevel helical gearbox | 10,500 kg



ROTARY KILN DRIVE

565 kW | 15,600 kg

replication of an existing gearbox

reinforced design

retention of the existing  
connection dimensions